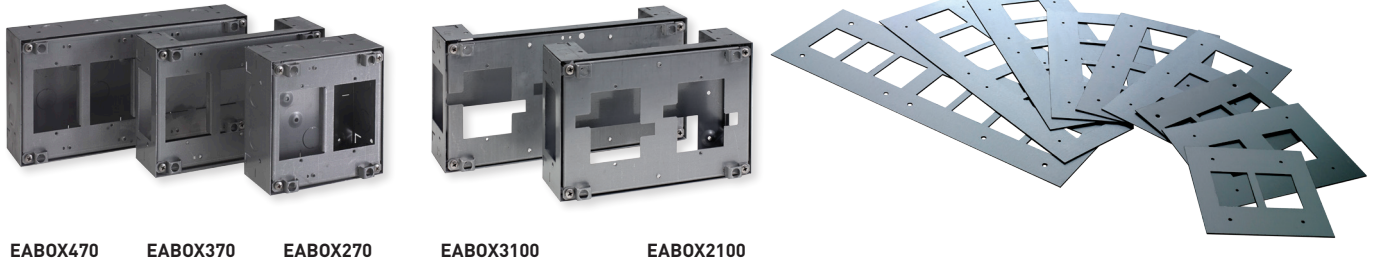


Datasheet



Excel Life™ Medical Range, Accessories Modular Recessed Wall Boxes and Standard Stainless Steel Cover Plates

CAT NO. **EABOX270, EABOX370, EABOX470, EABOX2100, EABOX3100, EA270PLSS, EA370PLSS, EA470PLSS, EA2270PLSS, EA2100PLSS, EA3100PLSS, EA2370PLSS, EA3370PLSS, EA3470PLSS**



EABOX470

EABOX370

EABOX270

EABOX3100

EABOX2100

Wall Boxes		
Cat No	EABOX270, EABOX370, EABOX470	EABOX2100, EABOX3100
Description	Excel Life Medial Range Accessories – Modular Recessed Wall boxes – Horizontal/Vertical Mounted	
Installation Type	Suitable to Wall Stud or Joinery	
Box Depth	65mm (Excluding Adjustable Tray)	
Dimensions	70mm Pitch	100mm Pitch
	EABOX270 2 Gang – 150mmW x 150mmH	EABOX2100 2 Gang – 225mmW x 150mmH
	EABOX370 3 Gang – 225mmW x 150mmH	EABOX3100 3 Gang – 300mmW x H 150mmH
	EABOX470 4 Gang – 300mmW x 150mmH	

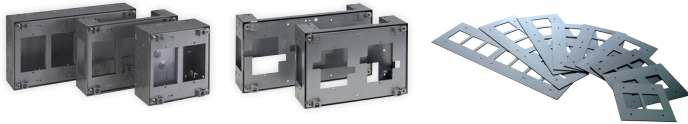
Standard Stainless Steel Wall Box Cover Plates		
Cat No	EA270PLSS, EA370PLSS, EA470PLSS, EA2270PLSS, EA2370PLS, EA3370PLSS, EA3470PLSS	EA2100PLSS, EA3100PLSS
Description	Excel Life Medial Range Accessories – Stainless Steel Standard Flush Wall Box Cover Plates*	
Dimensions	70mm Pitch	100mm Pitch
	EA270PLSS 2 Gang – 190mmW x 190mmH	EA2100PLSS 2 Gang – 265mmW x 190mmH
	EA370PLSS 3 Gang – 265mmW x 190mmH	EA3100PLSS 3 Gang – 340mmW x 190mmH
	EA470PLSS 4 Gang – 340mmW x 190mmH	
	EA2270PLSS 2 + 2 Gang – 340mmW x 190mmH	
	EA2370PLSS 2 + 3 Gang – 415mmW x 190mmH	
	EA3370PLSS 3 + 3 Gang – 490mmW x 190mmH	
	EA3470PLSS 3 + 4 Gang – 565mmW x 190mmH	

*Powder coated cover plates available on demand.

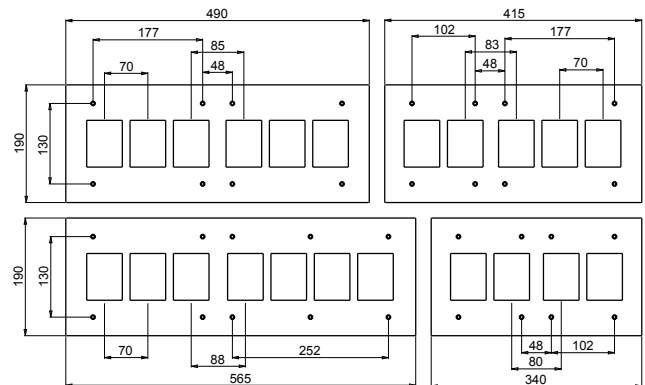
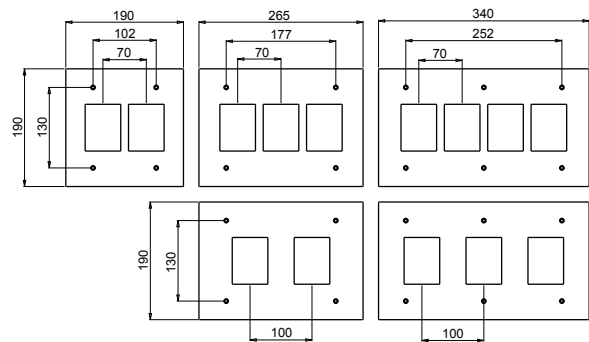
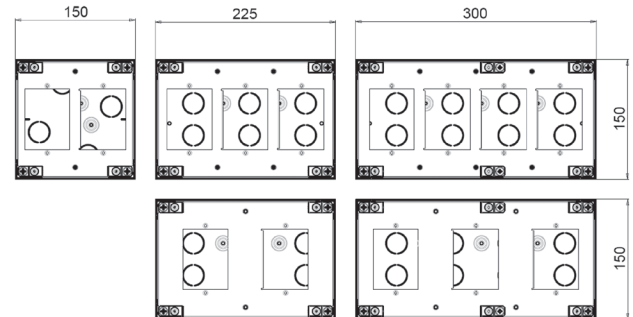
Excel Life™ Medical Range, Accessories Modular Recessed Wall Boxes and Standard Stainless Steel Cover Plates



CAT NO. **EABOX270, EABOX370, EABOX470, EABOX2100, EABOX3100, EA270PLSS, EA370PLSS, EA470PLSS, EA2270PLSS, EA2100PLSS, EA3100PLSS, EA2370PLSS, EA3370PLSS, EA3470PLSS**



- Suitable for Healthcare facilities such as Hospitals, Medical Centers,
- Modular system suitable for horizontal or vertical installations
- Adjustable geartray
- Multiple side cable entries
- Earth point and Earth cable provided



Single product					
Cat No	Dimensions	Quantity	Barcode	Quantity	Barcode
EABOX270	190mmW x 190mmH	1	9321001434214	12	9321001434375
EABOX370	265mmW x 190mmH	1	9321001434221	-	-
EABOX470	340mmW x 190mmH	1	9321001434238	-	-
EABOX2100	265mmW x 190mmH	1	9321001434245	-	-
EABOX3100	340mmW x 190mmH	1	9321001434252	-	-
EA270PLSS	190mmW x 190mmH	1	9321001434269	10	9321001434382
EA370PLSS	265mmW x 190mmH	1	9321001434276	10	9321001434399
EA470PLSS	340mmW x 190mmH	1	9321001434283	10	9321001434405
EA2100PLSS	265mmW x 190mmH	1	9321001434290	10	9321001434412
EA3100PLSS	340mmW x 190mmH	1	9321001434306	10	9321001434429
EA2270PLSS	340mmW x 190mmH	1	9321001434313	10	9321001434436
EA2370PLSS	415mmW x 190mmH	1	9321001434320	10	9321001434443
EA3370PLSS	490mmW x 190mmH	1	9321001434337	10	9321001434450
EA3470PLSS	565mmW x 190mmH	1	9321001434344	10	9321001434467

HPM Legrand - AUS
1300 369 777
www.legrand.com.au
ABN 31 000 102 661

HPM Legrand - NZ
0800 476 009
www.legrand.co.nz

Refer to your group buying office, HPM Legrand Sales Representative or HPM Legrand Sales Office for pricing.

Please note: specifications are subject to change without prior notice.