

PLEXO³ IP65 ENCLOSURES



ALL THE SPACE YOU NEED
WITH MAXIMUM
CONVENIENCE THROUGH
MODULARITY



-> CATALOGUE PAGES INSIDE

THE **GLOBAL SPECIALIST**
IN ELECTRICAL AND DIGITAL BUILDING INFRASTRUCTURES

 **legrand**[®]

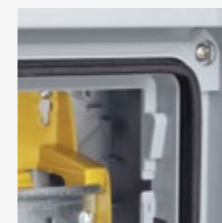
IDEAL FOR A MULTITUDE OF APPLICATIONS

WITH IP65 RATING PROTECTION AND OPTIMISED DIMENSIONS, PLEXO³ ENCLOSURES CAN BE USED FOR DISTRIBUTION OF UP TO 72 MODULES.

The design of Plexo³ enclosures makes them suitable for use in outdoor and industrial applications, as well as in agricultural and photovoltaic installations.



STRONG WITH A HIGH IP65 RATING



High IP65 rating guaranteed for applications in damp places



Double closing point to ensure a good seal. Handle can be fitted with a lock, to guarantee safety.



Knockout cable entries at the top, bottom and sides of the enclosure. Can also be fitted with cable glands for easier cabling



IK09 for enhanced impact resistance (shock resistant polystyrene) for longer life time



CHARACTERISTICS

- Class II insulated enclosure
- Impact resistant reinforced polystyrene material
- IP65 - IK09
- Self-extinguishing: resistance to incandescent wire 650°C
- Conform to AS/NZS 61439.3 and IEC 62262 standards
- Colour
 - Box: light grey L750 A
 - Cover: dark grey R746 A
 - Marker holder: transparent blue
- Rated operating and insulation voltage of 400V a.c. 50/60 Hz
- 10 sizes of enclosures
 - 4 to 72 modules
 - 12 modules with 1 to 3 rows
 - 18 modules with 1 to 4 rows



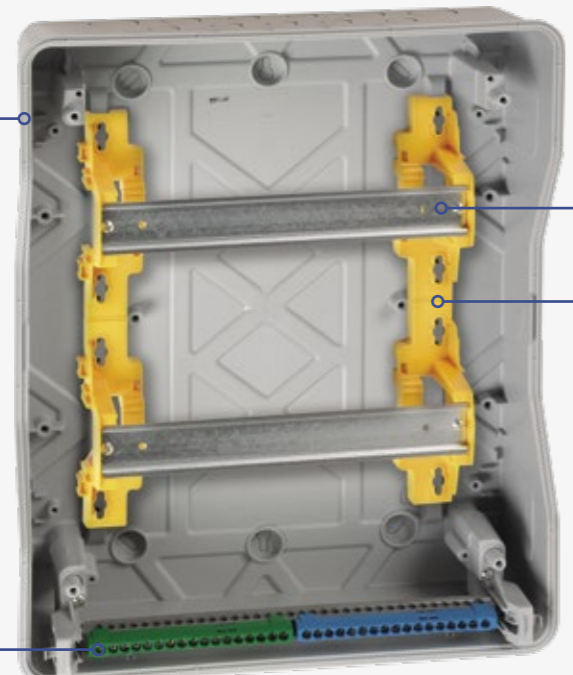
CLEVER ACCESSORIES THAT SAVE YOU TIME

- Different sizes of direct piercing end caps can be mounted at the top, bottom and sides of the enclosure
- Cable glands can be fitted according to your requirements

DIRECT PIERCING END CAPS

- ISO membrane glands can be pierced directly by the cable
- Tool free fitting and removal
- IP65 guaranteed with the cable inserted.
- Larger cable capacity than a standard cable gland
- Cable held securely in the membrane gland

SPEED AND EASE OF INSTALLATION



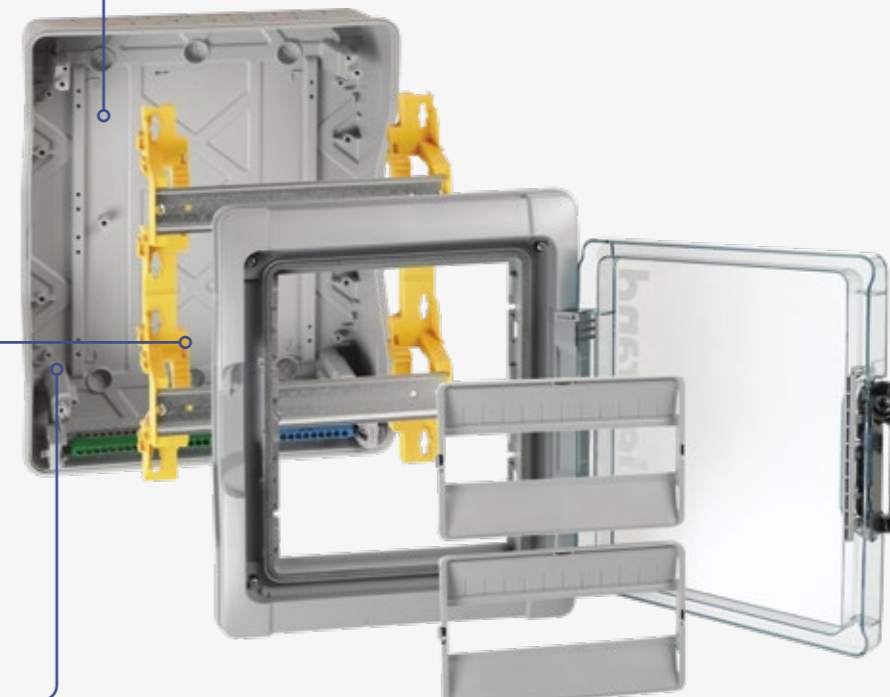
Removable faceplate for easier maintenance of individual rows

Enclosures fitted with terminal blocks, which can easily be repositioned, at the top and bottom of the box

Rails can be removed one by one

Removable chassis for wiring outside the enclosure

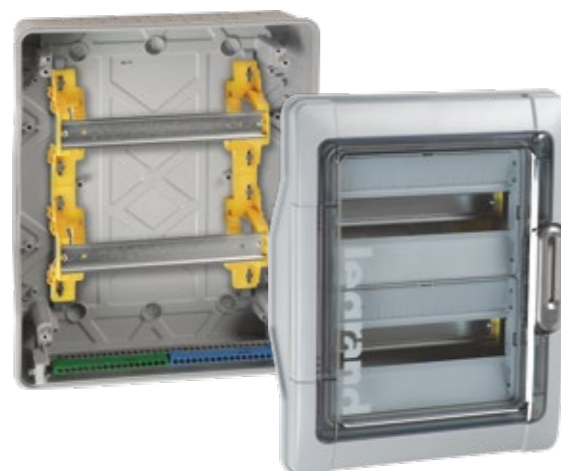
MAXIMUM CONVENIENCE THROUGH MODULARITY



Space behind the rails
- 2 position rails with adjustable depth
45 mm

Space between the rails
- allowing cables to run easily
150 mm

Space at the side of the DIN rail to run cable through easily
38 mm



DOOR AND ENCLOSURE ARE BOTH FULLY REVERSIBLE

It makes no difference whether the wiring runs from the top or the bottom.



MATERIALS

- Box, cover, rail brackets, terminal brackets, hinge cover and faceplate: impact reinforced polystyrene
- Door: transparent polycarbonate
- Handle and door identifier indicator light: polycarbonate
- Handle bar: glass fibre-reinforced polycarbonate
- Entry glands: polypropylene + SEBS
- Cover/box screws and springs: stainless steel
- Other screws: zinc-coated steel
- Rails: galvanised steel

PLEXO³

PRODUCT INFORMATION



Self-extinguishing: resistance to incandescent wire 650°C
AS/NZS 61439.3
IP65 - IK09
Class II insulated enclosure
Door and enclosure fully reversible
Removable chassis and faceplates from 2-row versions up
2 position rail for modular products and moulded cases
Spacing between rails 150 mm
Lockable door handle, sealable cover and faceplate
Shock-resistant polystyrene material
Box colour light grey L750A, cover colour dark grey R746A
Supplied with IP2X Earth and Neutral terminal blocks
Spare blanking plate included as a standard from 12 modules
Blanking Inserts available for direct sunlight installation. Available on request.

Pack	Cat.Nos	Enclosures 4 to 8 module	
		Number of rows	Number of modules
1	601974	1	4
1	601976	1	6
1	601978	1	8

Pack	Cat.Nos	Enclosures 12 modules per row	
		Number of rows	Number of modules
1	601981	1	12
1	601982	2	24
1	601983	3	36

Pack	Cat.Nos	Enclosures 18 modules per row	
		Number of rows	Number of modules
1	601985	1	18
1	601986	2	36
1	601987	3	54
1	601988	4	72

Pack	Cat.Nos	Accessories
1	001966	Key lock N° 850
1	001969	Fixing lugs Set of 4 wall mounting lugs
1	001961	Blanking plates 5, separable into modules or 1/2 module, Grey R746A
1	001955	Direct piercing end caps Pack consisting of 2 Ø32mm ISO end caps, 5 Ø25mm ISO end caps and 10 Ø20mm ISO end caps
2	001967	Joining kit Allows cables to be run horizontally or vertically between 2 cabinets or multifunction sleeves while maintaining IP65 protection
1	001962	Perforated plates Allow the DIN rail to be replaced with a Lina 25 plate when integrating non-modular products For 18 modules cabinets Height 150mm



Scan the QR code for data sheet

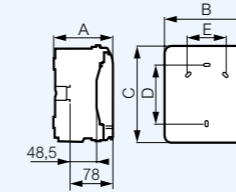


PLEXO³

DIMENSIONS

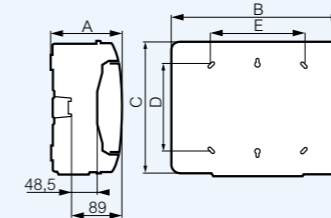
■ Dimensions

Enclosures 4, 6 and 8 modules



Cat.Nos	Dimensions (mm)				
	A	B	C	D	E
601974	115.6	128	200	120	-
601976	115.6	164	200	120	70
601978	115.6	200	200	120	106

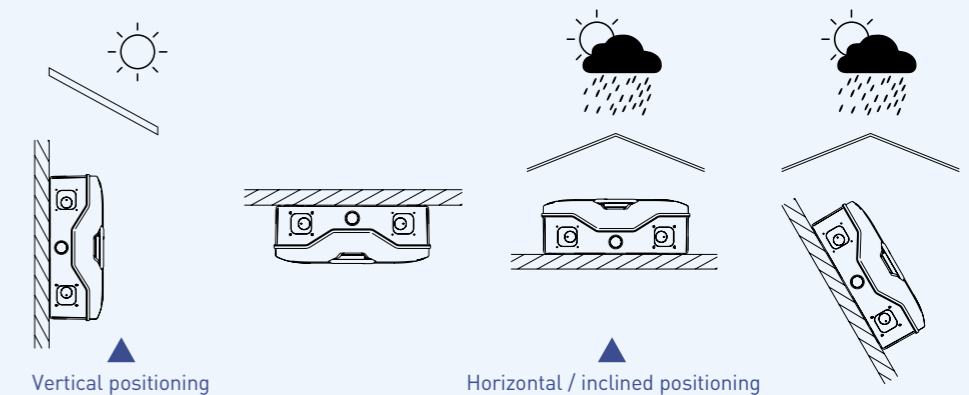
Enclosures 12, 24 and 36 modules



Cat.Nos	Dimensions (mm)				
	A	B	C	D	E
601981	141	340	282	180	180
601982	161	340	432	330	180
601983	161	340	622	480	180
601985	141	448	282	180	290
601986	161	448	432	330	290
601987	161	448	622	480	290
601988	161	448	822	680	290

■ Recommended installation positioning

To reach best performance and longevity, it is recommended that enclosures are sheltered from direct sunlight and rain in horizontal / inclined positioning



■ Storage and installation temperature

601974/76/78 enclosure: -15°C to 55°C (+70°C/24H)
601981/82/83/85/86/87/88 enclosure: -25°C to 55°C (+70°C/24H)
Operating temperature: -25°C to 40°C

■ Number of knockouts on each side

Cat.Nos	Top / bottom			Left / right		
	Ø20mm	Ø25mm	Ø32mm	Ø20mm	Ø25mm	Ø32mm
601974	2	1	-	2	-	-
601976	4	1	-	2	-	-
601978	6	1	-	2	-	-
601981	7	2	2	-	-	2
601982	13	2	2	-	-	3
601983	13	2	2	-	-	4
601985	12	2	3	-	-	2
601986	13	4	3	-	-	3
601987	13	4	3	-	-	1
601988	13	4	3	-	-	5

■ Direct piercing end caps

Cat.No	Type	Number of end caps per pack	Ø	
			Min. (mm)	Max. (mm)
001955	ISO20	10	4	13
	ISO25	5	9	18
	ISO32	2	12	25

■ Earth and neutral terminal blocks

Cat.No	Earth bar	Neutral bar
601974	4 x 16mm ²	4 x 16mm ²
601976	4 x 16mm ²	4 x 16mm ²
601978	8 x 16mm ²	8 x 16mm ²
601981	13 x 25mm ²	13 x 25mm ²
601982	1 x 25mm ² + 16 x 16mm ²	1 x 25mm ² + 16 x 16mm ²
601983	1 x 25mm ² + 21 x 16mm ²	1 x 25mm ² + 21 x 21mm ²
601985	1 x 25mm ² + 16 x 16mm ²	1 x 25mm ² + 16 x 16mm ²
601986	1 x 25mm ² + 21 x 16mm ²	1 x 25mm ² + 21 x 16mm ²
601987	1 x 25mm ² + 26 x 16mm ²	1 x 25mm ² + 26 x 16mm ²
601988	1 x 25mm ² + 34 x 16mm ²	1 x 25mm ² + 34 x 16mm ²



TO DOWNLOAD
THE CATALOGUE
[SCAN THE QR CODE](#)



Legrand Australia
Building 4, Nexus Industry Park
43-47 Lyn Parade, Prestons NSW 2170
Tel.: 1300 369 777
www.legrand.com.au

Legrand New Zealand
106-124 Target Road
Glenfield, Auckland 0627
Tel.: 0800 476 009
www.legrand.co.nz