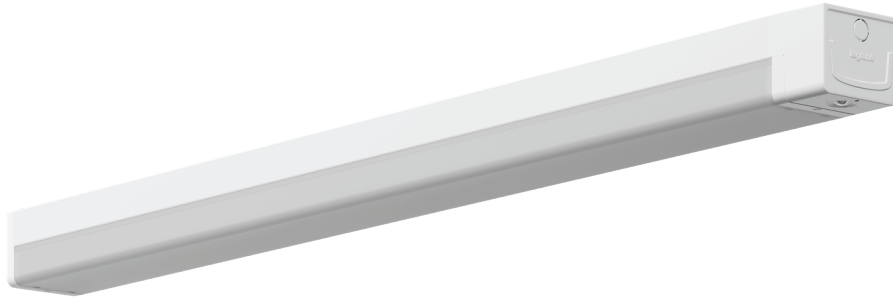




Datasheet Economy LED Batten - Standalone Emergency



CAT. NO. 659320SA, 659321SA, 659322SA, 659323SA, 659324SA, 659325SA



Cat. No.	659320SA	659321SA	659322SA	659323SA	659324SA	659325SA
Description	L6 LED Batten		L12 LED Batten		L15 LED Batten	
Nominal Input Voltage	230 - 240 V a.c. 50 Hz					
Operation Mode	Switched Maintained					
Emergency Classification C_0/C_{90}	D50					
Battery	Lithium-ion 6.4 V, 1.5 Ah					
Power Consumption (W)	Mains only	20	36		50	
	Emergency pack	1				
	Total	21	37		51	
Light Source	Selectable LED (3000K / 4000K / 6000K)					
Inrush Current (A)	23	31		38		
Driver Type	Fixed output / Non-Dimmable					
Movement Sensor	N/A	Yes	N/A	Yes	N/A	Yes
CRI	>80					
Light Source Life (LSL)	50,000 hours @ L70					
Luminaire Output (lm) (Mains Model)	3000 K	1800	3700		4800	
	4000 K	2100	4300		5500	
	6000 K	2000	4000		5200	
Luminaire Efficacy at 4000K (lm/W)	100	116		108		
Chromaticity Tolerance	MacAdam Ellipse: 4 SDCM					
Power Factor	> 0.9					
IK Rating	IK06					
IP Rating	IP20					
Body Construction	Zinc steel (powder coated)					
Diffuser Construction	Opal Polycarbonate					
Product Weight (Kgs)	L6=2, L12=3.3, L15=4					
Compliance	AS/NZS 60598, AS/NZS 2293					
Product Marking	 					

Economy LED Batten - Standalone Emergency

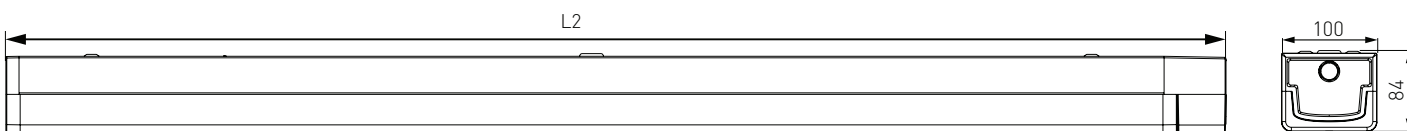


CAT. NO. 659320SA, 659321SA, 659322SA, 659323SA, 659324SA, 659325SA

FEATURES

- iSmart™ temperature sensing technology for the Li-ion battery.
- Electronics designed to lengthen the life of the battery.
- Environmentally friendly battery.
- Available in 2 foot, 4 foot or 5 foot lengths.
- Tri-colour LEDs (3000K/4000K/6000K) selection.
- Three lumen packages: 2100lm, 4300lm or 5500lm (4000K colour temperature)
- Available with integrated ON/OFF microwave sensor option.
- Large terminal block.
- Designed in Australia.
- 3 Year Warranty

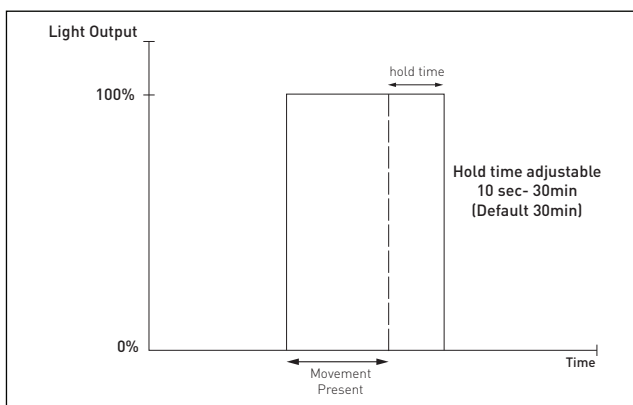
DIMENSIONS



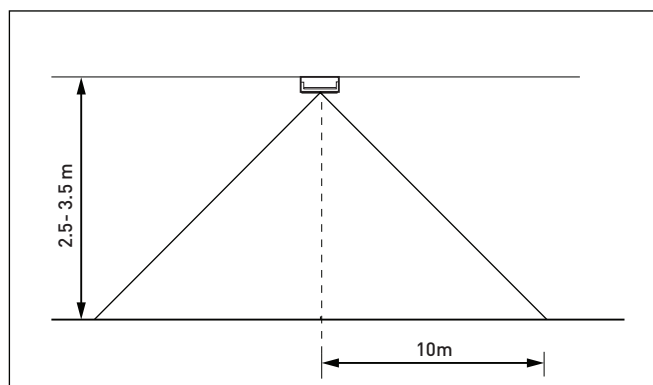
Length	EM [L2]
L6	680
L12	1280
L15	1580

Note: All dimensions are in mm.

ON/OFF SENSOR FUNCTION



SENSOR DETECTION RANGE



Economy LED Batten - Standalone Emergency

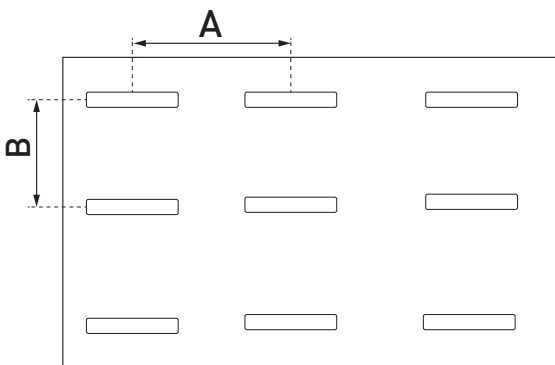


CAT. NO. 659320SA, 659321SA, 659322SA, 659323SA, 659324SA, 659325SA

ACCESSORIES

Cat. No.	Description
659402	Eco LED Batten L6 Wire Guard - White
659403	Eco LED Batten L12 Wire Guard - White
659404	Eco LED Batten L15 Wire Guard - White

SPACING TABLE



Maximum spacings between luminaires for 0.2 lux (Australia)

Mounting Height (m)	2.4	2.7	3.0	3.3	3.6	4.0
A	13.2	14.8	16.5	18.1	19.8	21.8
B	13.2	14.8	16.5	18.1	19.8	21.8

As per AS/NZS 2293:2018

Maximum spacings between luminaires for 1.0 lux (New Zealand)

Mounting Height (m)	2.4	2.7	3.0	3.3	3.6	4.0
A	10.5	10.8	11.0	11.2	11.4	11.5
B	10.5	10.8	11.0	11.2	11.4	11.5

As per AS/NZS 2293:2018

Legrand - Australia
1300 369 777
www.legrand.com.au
ABN 31 000 102 661

Legrand - New Zealand
0800 476 009
www.legrand.co.nz

Refer to your group buying office, Legrand Sales Representative or Legrand Sales office for pricing.

Please note: specifications are subject to change without prior notice.

