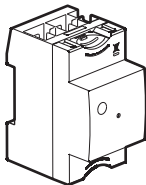
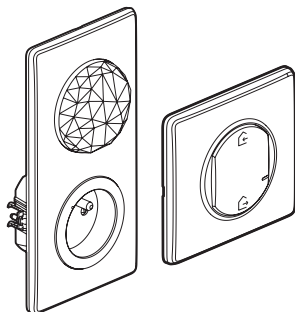


Requires you to buy and install the "... with Netatmo" connected starter pack first.

Control  
Module

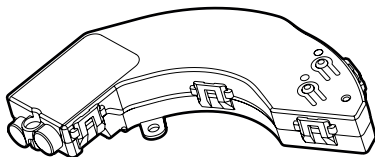


Gateway and Home/Away wireless  
switch


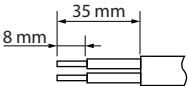




OR

Contents



## Characteristics

 <p>+ 50° C - 5° C</p> <p>IP 44 100-240 Vac 50/60 Hz</p>	 <p>8 mm      35 mm</p>  <p>1 x 2,5 mm<sup>2</sup> 2 x 1,5 mm<sup>2</sup></p>	<p>①</p> 
<p>240 Vac max.</p>		<p>1 x 500 VA</p>
<p>100 Vac max.</p>		<p>1 x 270 VA</p>

① Roller shutter motor

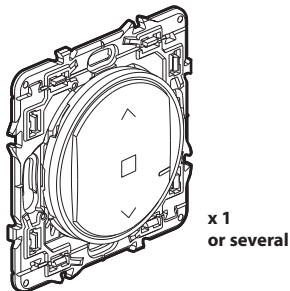


The circuit must be protected by a 10 A circuit breaker.

## Before you start

If you plan to install connected micromodules for rolling shutters, read the following precautions:

**To order a roller shutter micromodule with one or more wireless controls, only use the products:**



Wireless control for rolling shutter  
(not included in this pack)

Provide wireless controls for roller shutters for each additional control point.

### **To create a centralized order:**

Use one or several wireless controls for roller shutters.

## 1 Necessary safety precautions

1



OFF

Switch OFF the power at main circuit breaker

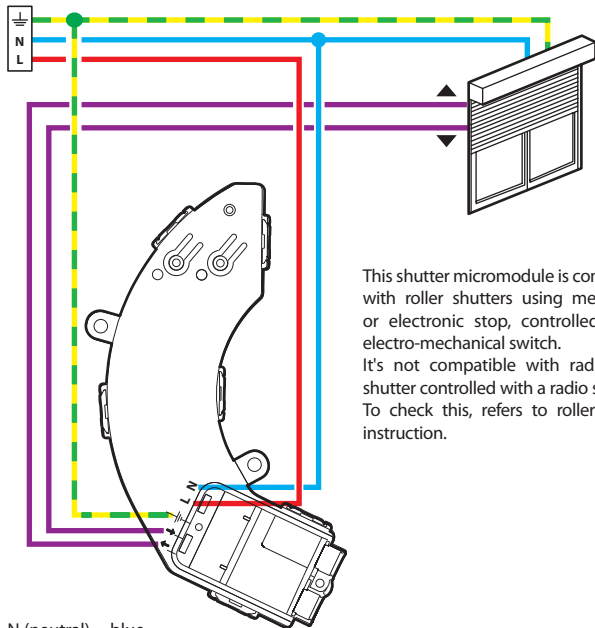
2



**Make sure that the power is OFF before continuing with the installation.**

## 2 Install the connected micromodule for rolling shutter

Wire the connected micromodule for roller rolling shutter



This shutter micromodule is compatible with roller shutters using mechanical or electronic stop, controlled by an electro-mechanical switch.

It's not compatible with radio roller shutter controlled with a radio switch.

To check this, refers to roller shutter instruction.

- N (neutral) = blue
- L (live) = any except blue and gree/yellow
- $\perp$  (earth) = green/yellow

Frequency bands: 2.4 - 2.4835 GHz  
Power level: < 100 mW

### 3 Start to configure the installed products

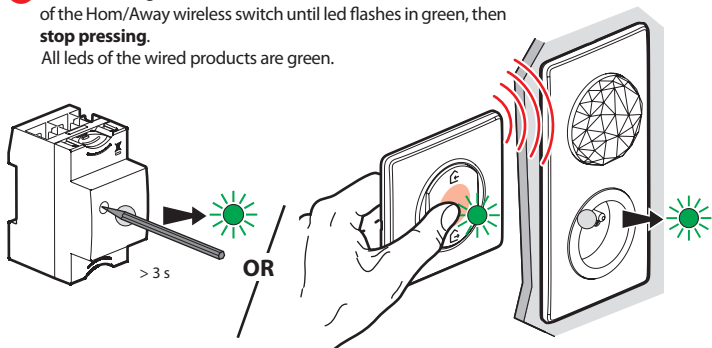
1



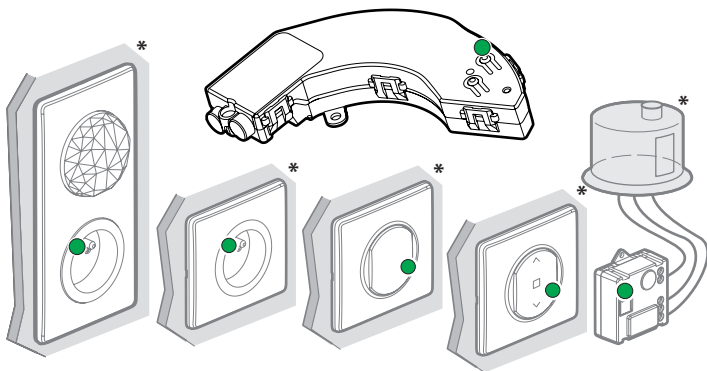
Turn the power on at the main circuit breaker  
**ON**

2 Press the configuration button of Modul Control or at the center of the Hom/Away wireless switch until led flashes in green, then **stop pressing**.

All leds of the wired products are green.

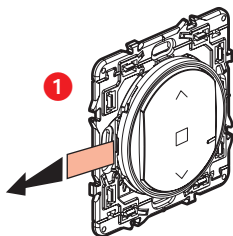


3 The indicator lights on the products that you have wired will turn green one by one.



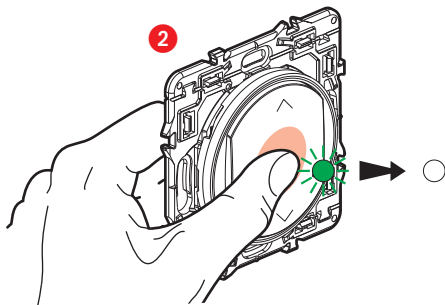
\* Example of products not supplied

#### 4 Prepared a wireless control



Not included  
in this pack.

Remove the protective strip  
of the wireless control of your choice.



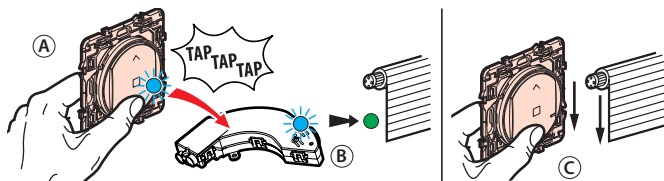
**Briefly** press the wireless control to activate it.  
The indicator light will flash green and then switch off.

## 5 Pair the wireless control for rolling shutters



Make sure that the indicator lights on the products are green and not flashing. If not, go back to step ③.

### To pair a wireless control with one or several connected rolling shutters



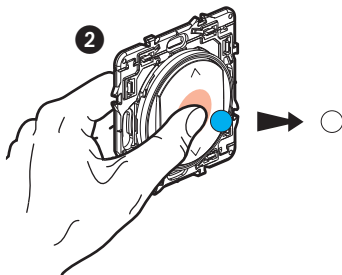
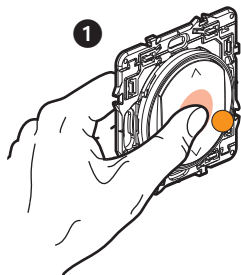
- ① Keep pressing the button on the wireless control and tap the micromodule for rolling shutters you want to control 3 times with the control.
- ② The two indicator lights on the product will flash blue rapidly.
- ③ The indicator lights on the two products will briefly turn blue, and then the light on the wired product will turn green again and the light on the wireless control will switch off. The pairing was successful.

### Multiple pairing:

You can control several rolling shutters with the same wireless control by repeating the operation for each product that you want to control.

## If necessary, cancel the wireless control pairing

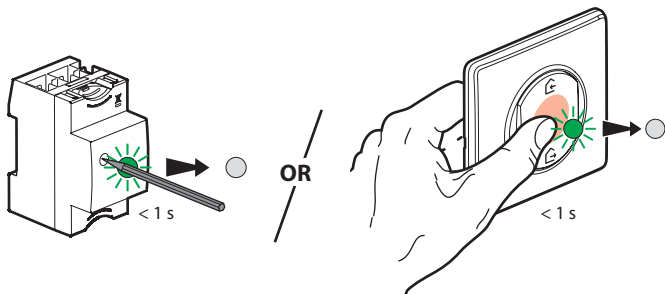
- 1 Press the middle of the button on the wireless control until the indicator light turns orange without flashing.
- 2 Confirm the cancellation by briefly re-pressing the middle of this button on the wireless control and the light will turn blue and then switch off. The pairing has now been cancelled.



You can pair the wireless control with new products by starting again from step ⑤.

- 6 Repeat steps ④ and ⑤ for all wireless controls you want to install.

## 7 Complete the configuration



To complete your installation,  
briefly press the middle of the **wireless general control**.

**All the indicator lights on the products will switch off.**

**To add a connected product to your connected installation, you should follow the instruction:**

- in the **Legrand Home + Control application** (settings/**Add a new product** section)
- or consult the user manual on **legrand.fr**



**[www.legrand.fr/reference/067697](http://www.legrand.fr/reference/067697)**

LEGRAND - Pro and Consumer Service - BP 30076  
87002 LIMOGES CEDEX FRANCE • [www.legrand.com](http://www.legrand.com)

** Safety instructions:**

This product should be installed in compliance with installation rules, preferably by a qualified electrician. Incorrect installation and/or incorrect use can lead to risk of electric shock or fire.

Before carrying out the installation, read the instructions and take account of the product's specific mounting location.

Do not open up, dismantle, alter or modify the device except where specifically required to do so by the instructions. All Legrand products must be opened and repaired exclusively by personnel trained and approved by Legrand. Any unauthorised opening or repair completely cancels all liabilities and the rights to replacement and guarantees.

Use only Legrand brand accessories.

**SIMPLIFIED EU DECLARATION OF CONFORMITY**

The undersigned,

***Legrand***

declares that the radio-electric equipment referred to in these instructions  
complies with directive 2014/53/UE.

The full text of the EU declaration of conformity is available  
on the following website:

**[www.legrandoc.com](http://www.legrandoc.com)**