

## Linea Range grids & plates



LN770/4GPL



LN777PL

Pack	Cat No.	Grids and cover plates only Plate size: 82 x 127mm. Mounting centres 84mm. Low 4mm profile. Available in high gloss WE (white), CR (cream) and BL (black)
40	LN770/0GPL	Blank grid & cover plate only
40	LN770/1GPL	Grid & cover plate only for 1 gang switch
40	LN770/2GPL	Grid & cover plate only for 2 gang switch
40	LN770/3GPL	Grid & cover plate only for 3 gang switch
40	LN770/4GPL	Grid & cover plate only for 4 gang switch
40	LN770/5GPL	Grid & cover plate only for 5 gang switch
40	LN770/6GPL	Grid & cover plate only for 6 gang switch

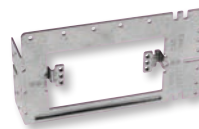
Pack	Cat No.	Cover plates only for powerpoints Plate size: 127 x 82mm. Low 4mm profile. Available in high gloss WE (white), CR (cream), BL (black). Surcharge applies for MS (matt silver), SM (stone metal) and AS (asphalt)
40	LN787PL	Cover plate only for single powerpoint
40	LN787XPL	Cover plate only for single powerpoint with extra switch
40	LN777PL	Cover plate only for double powerpoint
40	LN777APL	Cover plate for auto switch double powerpoint
40	LN777XPL	Cover plate for double powerpoint with extra switch
40	LN777ESPL	Cover plate for extra-safe double powerpoint
40	LN777AESPL	Cover plate for auto switched, extra-safe double powerpoint



LN770/5PL

Pack	Cat No.	Cover plates only for switches Plate size: 82 x 127mm. Mounting centres 84mm. Low 4mm profile. Available in high gloss WE (white), CR (cream), BL (black). Surcharge applies for MS (matt silver), SM (stone metal) and AS (asphalt)
40	LN770/0PL	Blank cover plate only
40	LN770/1PL	Cover plate only for 1 gang switch
40	LN770/2PL	Cover plate only for 2 gang switch
40	LN770/3PL	Cover plate only for 3 gang switch
40	LN770/4PL	Cover plate only for 4 gang switch
40	LN770/5PL	Cover plate only for 5 gang switch
40	LN770/6PL	Cover plate only for 6 gang switch

## Linea Range mounting accessories



LN143

Pack	Cat No.	Stud bracket
10	LN143	Linea recessed stud bracket



LN711

Pack	Cat No.	Mounting clip
10	LN711	Linea Mounting clip to suit approx 5mm walls