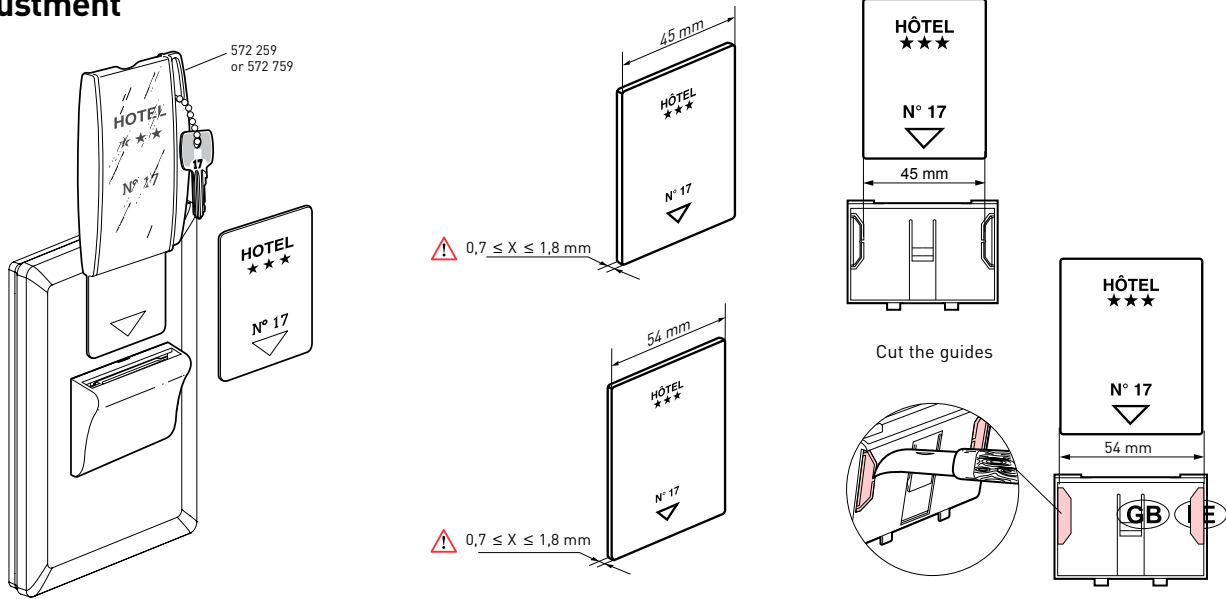
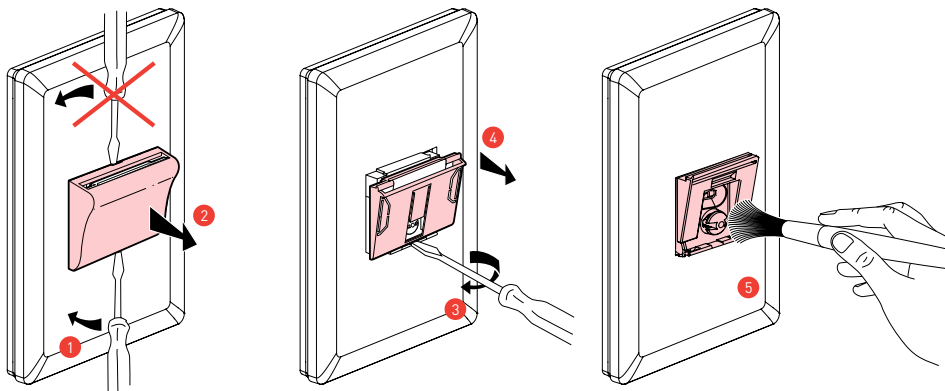


Excel Life™
Common Key Fob Electronic Switch with Time Delay
ECKFS/EDKFS

Adjustment



Dismantling / Maintenance



⚠ Safety instructions

This product should be installed in line with installation rules, by a qualified electrician. Incorrect installation and use can lead to risk of electric shock or fire. Before carrying out the installation, read the instructions and take account of the product's specific mounting location. Do not open up, dismantle, alter or modify the device except where specifically required to do so by the instructions. All Legrand products must be opened and repaired exclusively by personnel trained and approved by Legrand. Any unauthorised opening or repair completely cancels all liabilities and the rights to replacement and guarantees. Use only Legrand brand accessories.

Warranty

HPM Legrand will honour all statutory guarantees that you as a consumer are entitled to rely upon under the Australian Consumer Law against a manufacturer including a guarantee that any products HPM Legrand has manufactured or imported are of acceptable quality.

To make a claim under any statutory guarantee (or other warranty) you should first contact the supplier, contractor or retailer from whom you purchased the products.

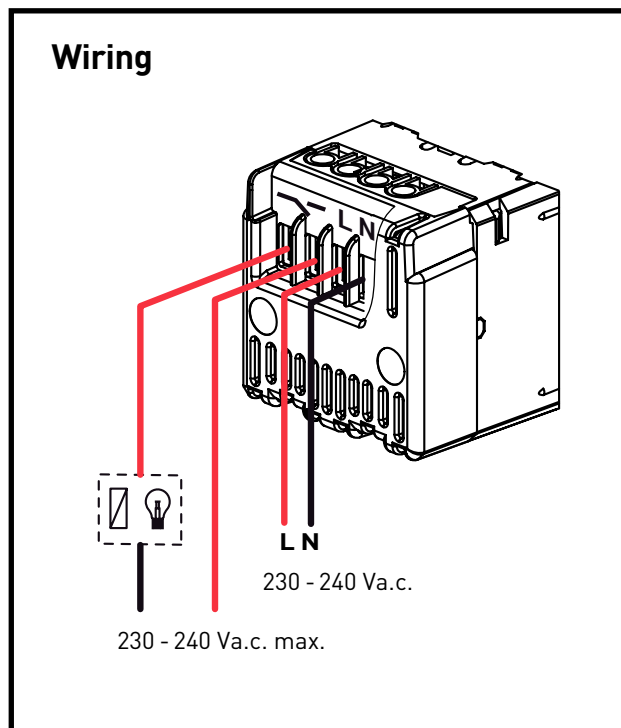
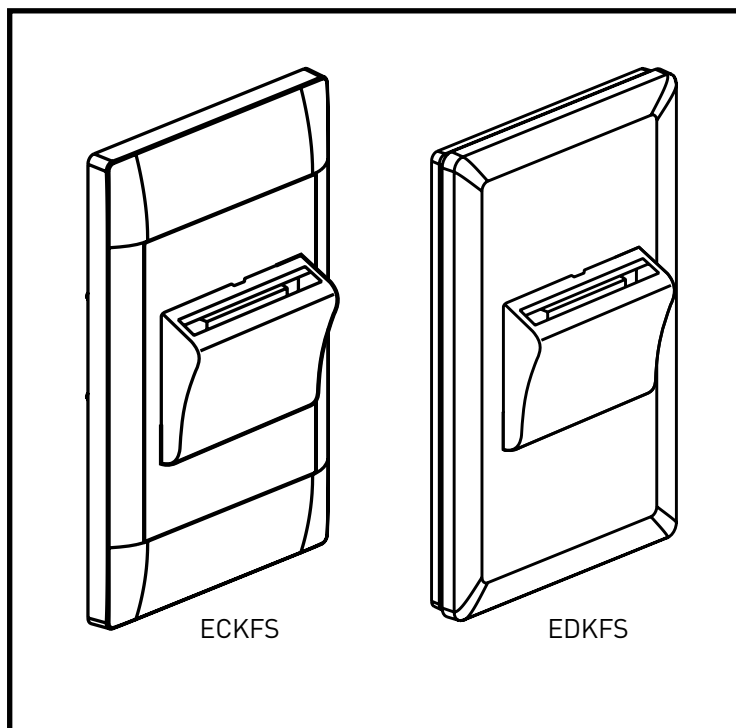
Customer Service

For all Customer Service and Technical Support enquires please call Monday to Friday during business hours.

HPM Legrand Australia
 1300 369 777
 www.legrand.com.au

HPM Legrand New Zealand
 0800 476 009
 www.legrand.co.nz

ABN: 31 000 102 661



Specifications:

Supply voltage: 230 - 240V a.c.

Terminal capacity: 2 x 2.5mm²

Standby power: 0.4W

Output power: 60Va

Storage temperature: -5°C to +40°C

Time delay: approximately 30 seconds after card removal

Note: To be equipped with single pole latching relay i.e. 412558

Use

