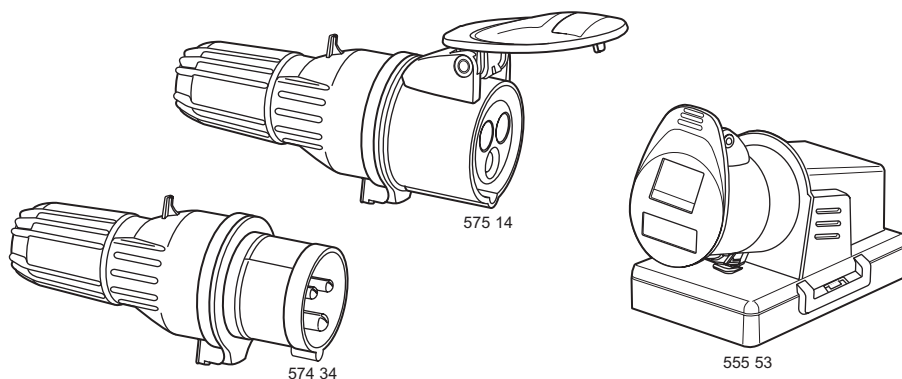


**P17 plugs, mobile sockets and surface-mounting sockets**  
**«New range 16 and 32 A»**

**Cat. Nos. : 555 50/53/57/58/73/77/78 - 556 53/57/58/73/77/78**  
**574 31/34/38/39 - 575 31/34/38/39 - 581 34/38/39**  
**582 14/18/19**



CONTENTS	Page
1. Definition .....	1
2. Use .....	1
3. Range .....	1
4. Dimensions .....	2
5. Connection, clamping/fixing .....	3
6. General characteristics .....	3-4
7. Conformity with the standards .....	5
8. Opening diagrams .....	5

**1. DÉFINITION**

The surface-mounting sockets and mobile sockets are intended for making current available.  
The plugs are intended to equip portable or mobile electrical equipment (e.g.: hand lamps, compressors, welding pots, etc.)  
Connected to a mobile socket, they both form an extension.  
These products are available in plastic, in 16A and 32A.

**2. USE**

**All functions**

- Product supplied in open position
- Philips No. 2 connection screws (cross-head slotted zinc-plated steel)
- Single orientation of connection screws

**Mobile products only**

- Screwless product closing by quarter turn
- Integral cable gland with fixing claw
- Automatic sealing on cable entry
- Cable fixing by simple cable gland clamping
- Captive cable gland
- Double thread for rapid clamping of cable gland
- Number of openings/closings tested : 20.

**Surface-mounting bases only**

- Product closing by simple snapping of cover onto base or box.
- Surface-mounting base without tapping :  
555 50/53/57/58 - 555 73/77/78.  
Base with closable entry ISO 20/25 on the back.  
Cover with closable entry ISO 20/25 by the top.
- Surface-mounting base for tapping : 556 53/57/58 - 556 73/77/78.  
Reversible box with 4 closable entries ISO 20/25 (1 back, 2 top, 1 bottom).

**3. RANGE**

**3.1 Outline of cat. nos.**

			Plugs	Mobile sockets	Surface mounting sockets	Surface mounting sockets for tapping
100 to 130 V 50/ 60 Hz	16 A	2P+E	574 31	575 11	555 50	
200 to 250 V 50/ 60 Hz	16 A	2P+E	574 34	575 14	555 53	556 53
	32 A	2P+E	581 34	582 14	555 73	556 73
380 to 415 V 50/ 60 Hz	16 A	3P+E	574 38	575 18	555 57	556 57
		3P+N+E	574 39	575 19	555 58	556 58
	32 A	3P+E	581 38	582 18	555 77	556 77
		3P+N+E	581 39	582 19	555 78	556 78

**3.2 Equivalence of cat. nos for «New generation P17 versus P17»**

			Plugs		Mobile sockets		Surface-mounting sockets	
			new P17 generation	P17	new P17 generation	P17	new P17 generation	P17
100 to 130 V 50/ 60 Hz	16 A	2P+E	574 31	(574 21)	575 11	(575 01)	555 50	(553 50)
200 to 250 V 50/ 60 Hz	16 A	2P+E	574 34	(574 24)	575 14	(575 04)	555 53	(553 53)
	32 A	2P+E	581 34	(581 24)	582 14	(582 04)	555 73	(553 73)
380 to 415 V 50/ 60 Hz	16 A	3P+E	574 38	(574 28)	575 18	(575 08)	555 57	(553 57)
		3P+N+E	574 39	(574 29)	575 19	(575 09)	555 58	(553 58)
	32 A	3P+E	581 38	(581 28)	582 18	(582 08)	555 77	(553 77)
		3P+N+E	581 39	(581 29)	582 19	(582 09)	555 78	(553 78)

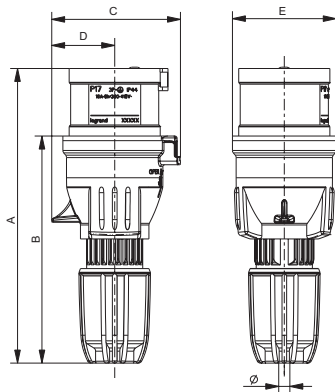
# P17 plugs, mobile sockets and surface-mounting sockets

## «New range 16 and 32 A»

Cat. Nos. : 555 50/53/57/58/73/77/78 - 556 53/57/58/73/77/78  
574 31/34/38/39 - 575 31/34/38/39 - 581 34/38/39  
582 14/18/19

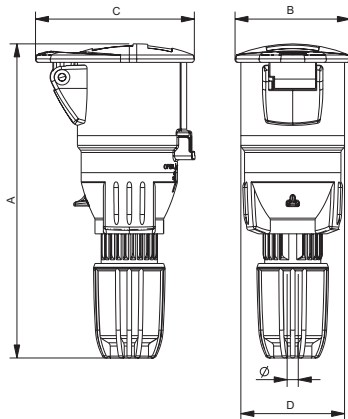
### 5. OVERALL DIMENSIONAL DRAWINGS

#### Straight plug



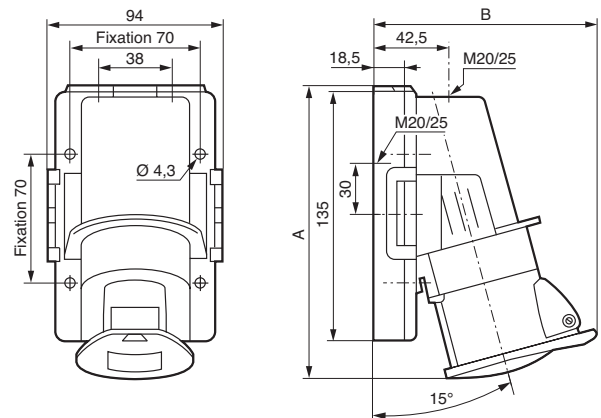
Current	Polarity	A	B	C	D	E	Ø
16 A	2P+E	143 to 159	106 to 122	65	30	56	8 to 14
	3P+E	143 to 159	106 to 122	69	34	56	8 to 14
	3P+N+E	152 to 168	115 to 131	78	38	65	10 to 18
32 A	2P+E	161 to 177	115 to 131	79	39	65	10 to 18
	3P+E	161 to 177	115 to 131	79	39	65	12 to 20
	3P+N+E	167 to 181	121 to 135	88	45	72	14 to 21

#### Mobile socket



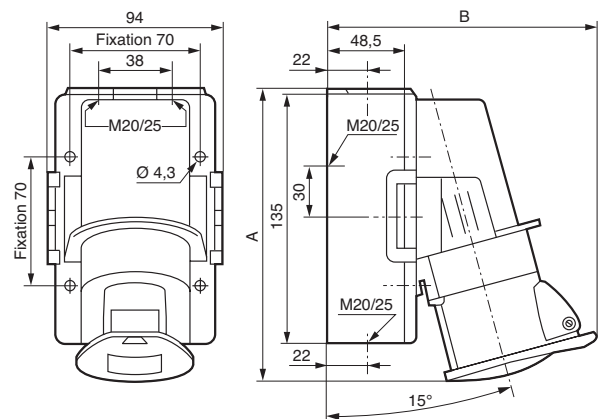
Current	Polarity	A	B	C	D	Ø
16 A	2P+E	153 to 169	55	78	56	8 to 14
	3P+E	153 to 169	62	85	56	8 to 14
	3P+N+E	164 to 180	70	94	65	10 to 18
32 A	2P+E	174 to 190	71	98	65	10 to 18
	3P+E	174 to 190	71	98	65	12 to 20
	3P+N+E	177 to 191	77	101	72	14 to 21

#### Simple surface-mounting socket



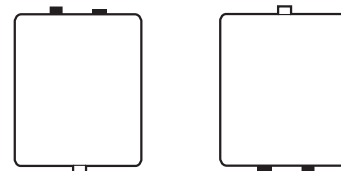
	16 A			32 A		
	2 P + E	3 P + E	3 P + N + E	2 P + T	3 P + E	3 P + N + E
A	158	158	171	181	181	192
B	121	123	130	135	135	140

#### Surface-mounting socket with tapping



	16 A			32 A		
	2 P + E	3 P + E	3 P + N + E	2 P + E	3 P + E	3 P + N + E
A	158	158	171	181	181	192
B	151	153	160	165	165	170

#### Reversible box for surface-mounting socket with tapping



**P17 plugs, mobile sockets  
and surface-mounting sockets  
«New range 16 and 32 A»**

Cat. Nos. : 555 50/53/57/58/73/77/78 - 556 53/57/58/73/77/78  
574 31/34/38/39 - 575 31/34/38/39 - 581 34/38/39  
582 14/18/19

**5. CONNECTION AND CLAMPING / FIXING**

**5.1 Connection capacity**

Function	Current	Conductors size (mm $\leq$ )	Type of conductors
Plugs and mobile sockets	16 A	1 to 2.5	flexible
	32 A	2.5 to 6	flexible
Surface mounting base	16 A	1.5 to 4	rigid
	32 A	2.5 to 10	rigid

**5.2 Clamping - fixing**

Current	Polarity	Tightening torque of connection terminal screws (Nm)	Stripping (mm)		Unsheathing (en mm)	Cable fixing (mm)
			Plugs	Mobile sockets and surface mounting socket		
16 A	2P+ $\perp$	0.7 to 1	8	12	130	8 to 14
	3P+ $\perp$		8	12		10 to 15.5
	3P+N+ $\perp$		8	12		
32 A	2P+ $\perp$		16	18		11.5 to 19.5
	3P+ $\perp$		16	18		
	3P+N+ $\perp$		16	18		

**6. GENERAL CHARACTERISTICS**

**Tests**

**6.1 Glow wire and use temperatures**

- 850° support of live parts
- 650° for the rest according to standard CEI 60 309.1
- Use temperatures : - 25°C / + 40°C

**6.2 UV resistance and degree of pollution**

UV resistance  
Radiation intensity : 550 W/m<sup>2</sup>  
Test duration : 168 hours  
Infrared and ultra-violet filter in order to get as close to the solar spectrum as possible.  
Result : no colour or material alteration.

**6.3 Degree of pollution**

Degree of pollution : 3

**6.4 Dielectric strength**

3 000 V - 50 Hz

**6.5 Leak tightness and IK**

- IP44
- IK09 (plugs and mobile sockets)
- IK 08 (surface mounting sockets)

**6.6 Ageing tests**

80° during 7 days (168 hours).

**P17 plugs, mobile sockets  
and surface-mounting sockets  
«New range 16 and 32 A»**

Cat. Nos. : 555 50/53/57/58/73/77/78 - 556 53/57/58/73/77/78  
574 31/34/38/39 - 575 31/34/38/39 - 581 34/38/39  
582 14/18/19

**6. GENERAL CHARACTERISTICS (continued)**

**6.7. Resistance to chemicals agents (continued)**

	Fixed products	Mobile products
<b>Aqueous solutions</b>		
Cold water .....	++	++
Warm water .....	+	++
Vapour .....	-	+
Saltwater 5 % .....	+	+
Hydrogen peroxide .....	-	
Water + detergent .....	++	
Water + surfactants .....	+	
Formic aldehyde .....	++	++
<b>Alcohols</b>		
Ethanol .....	++	++
Methyl alcohol .....	+	+
Propanol .....	++	
Butyl alcohol .....	++	
<b>Glycols</b>		
Ethylene glycol .....	-	
Carbolic acids .....	--	++
Cresols .....	-	-
<b>Bases</b>		
Ammoniac .....	+	++
Sodium hydroxide .....	+	++
Sodium hypochlorite (bleach 12°) .....	+	+
Potassium hydroxide .....	+	++
<b>Oxydizing strong acids</b>		
Concentrated acetic acid .....	--	+
Nitric acid 5 % .....	-	++
Sulfuric acid 10 % .....	-	++
Muriatic acid 30 % .....	-	+
Perchloric acid 70 % .....	-	
Hydrofluoric acid 70 % .....	--	++
Chromic acid 50 % .....	--	
Phosphoric acid 30 % .....	-	++
<b>Weak acids</b>		
Diluted acetic acid < 25 % .....	-	++
Citric acid .....	+	++
Lactic acid .....	-	++
Formic acid .....	--	+
Uric acid .....	++	
<b>Oils and lubricants - Animal origin</b>		
Lard .....	++	
Butter, cream .....	++	
<b>Oils and lubricants - Vegetal origin</b>		
Linseed oil .....	++	
Peanut / Olive .....	++	++
Castor oil .....	++	
Glycerin .....	++	
<b>Oils and lubricants - Mineral origin</b>		
Paraffin .....	++	+
Engine oil .....	++	
Silicone oil .....	+	
Cutting oil .....	++	
Hydraulic fluid .....	++	
<b>Hydrocarbons</b>		
Unlead petrol .....	++	+
Diesel oil .....	++	+
Kerosen .....	++	++
White spirit .....	++	++

**6.7. Resistance to chemicals agents (continued)**

Trichloroethylene .....	+	-
Trichloroethane .....	++	
Perchloroethylene .....	++	-
Methyl chloride .....	-	
Carbon tetrachloride .....	+	
Chloroform .....	+	
<b>Aromatic solvents</b>		
Benzen .....	++	+
Toluene .....	++	+
Xylene .....	++	-
<b>Aliphatic solvents</b>		
Hexane .....	++	++
<b>Fluoride solvents</b>		
Trichlofluoridmethan .....	--	
<b>Ketones</b>		
Acetone .....	+	+
Methyl Etyl Ketone .....	+	+
Ethyl acetate .....	+	+
<b>Turpens</b>		
Turpentine .....	+	-

**Resistance to chemical agents at ambient temperature according to risks of exposure with spraying.**

++ excellent resistance (continue exposure)  
+ good resistance (durable exposure)  
- limited resistance (possible short exposure)  
-- light resistance (exposure to avoid)

# P17 plugs, mobile sockets and surface-mounting sockets «New range 16 and 32 A»

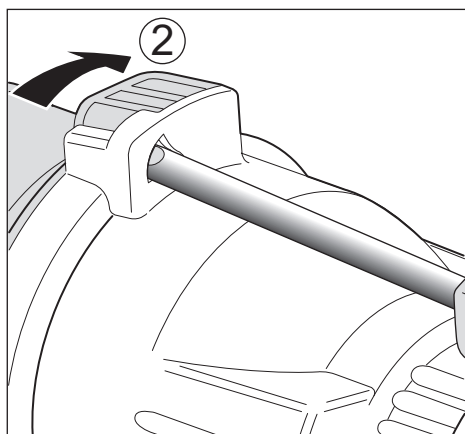
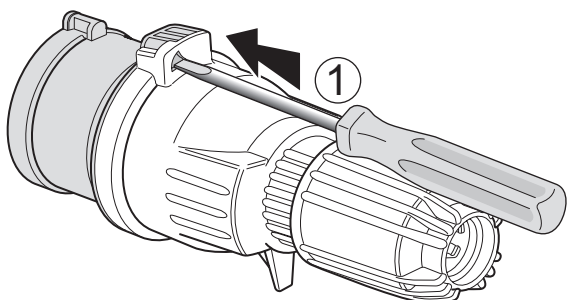
Cat. Nos. : 555 50/53/57/58/73/77/78 - 556 53/57/58/73/77/78  
574 31/34/38/39 - 575 31/34/38/39 - 581 34/38/39  
582 14/18/19

## 7. CONFORMITY WITH THE STANDARDS

- CEI 60 309.1 / NF EN 60 309.1 : Plugs, socket-outlets and couplers for industrial purposes. (general requirements).
- CEI 60 309.2 / NF EN 60 309.2 : Dimensional interchangeability requirements for pin and pin-bushing accessories.
- CEI 60 529 / NF EN 60 529 : IP
- NF EN 62 262 : IK.

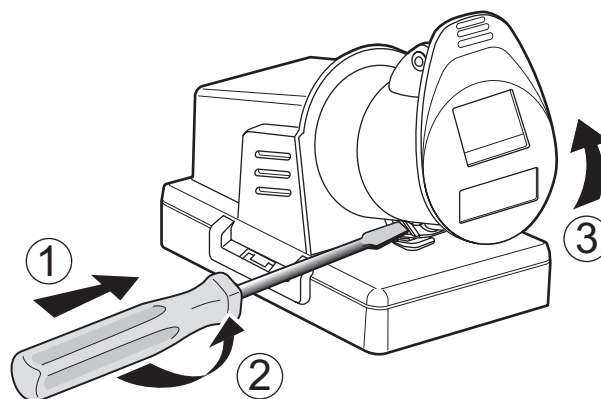
## 8. OPENING DIAGRAMS

### 8.1 Mobiles products

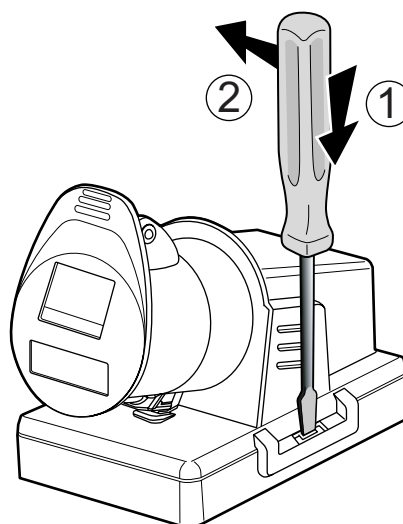


### 8.2 Fixed products

Opening of the socket outlet



Opening of the base plate



### 8.3 Tools to be used

Opening with flat screwdriver (5 mm)

