

CONTENTS	Page
1. Use .....	1
2. Technical characteristics .....	1
3. Dimensions .....	2
4. Connection .....	2
5. Removal .....	3
6. Installation .....	3
7. Settings .....	4
8. Performance .....	5
9. Care .....	6
10. Standards and certifications .....	6

**1. USE**

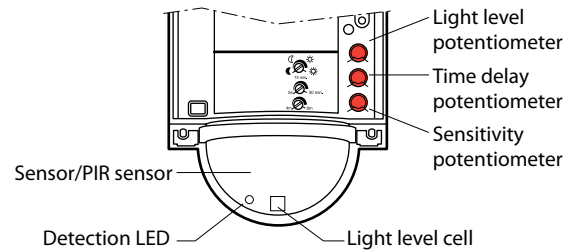
This device is used to control a light source automatically by detecting movement in the surveillance zone, to be installed in areas without natural light (corridor, storage room, equipment room, toilets, etc).  
 Movement detector with 180° detection angle.  
 Detection type: infrared (PIR)  
 Mounting type: wall, false ceiling

**2. TECHNICAL CHARACTERISTICS**

Voltage: 240 V~  
 Frequency: 50/60 Hz  
 Consumption on standby: 0.75 W  
 Output via normally open contact connected to the phase  
 Wiring: 1x2.5mm<sup>2</sup>/2x1.5mm<sup>2</sup>  
 Number of terminals: 3  
 Terminal type: screw  
 For installation with a flush-mounting box  
 Drilling diameter: 67 mm  
 Weight: 114 g  
 Impact resistance: IK04  
 Penetration by solid and liquid matter: 0 488 94 - 0 489 11: IP42  
 0 488 95 - 0 489 31: IP55  
 Usage temperature: - 5°C to + 45°C  
 Storage temperature: - 20°C to + 70°C

**2. TECHNICAL CHARACTERISTICS (continued)**

Cover removed



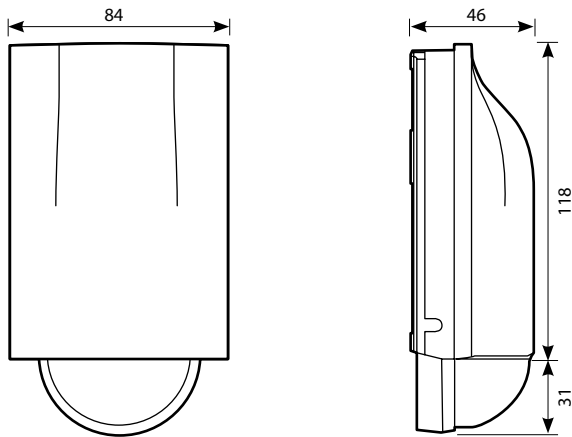
①		②		③		④		⑤		⑥		⑦		⑧		
230 V~	2000 W	8.5 A	1000 VA	4.3 A	1000 VA	4.3 A	10x(2x36 W)	4.3 A	250 W	1 A	250 W	1 A	250 W	1 A	500 VA	2.1 A

- 1 - Halogen bulbs
- 2 - ELV halogen, compact fluorescent and fluorescent bulbs with separate electronic ballast
- 3 - ELV halogen, compact fluorescent and fluorescent bulbs with separate ferromagnetic ballast
- 4 - Fluorescent tubes

- 5 - Compact fluorescent bulbs with built-in electronic ballast
- 6 - Compact fluorescent bulbs with built-in ferromagnetic ballast
- 7 - LED bulbs
- 8 - Contactor

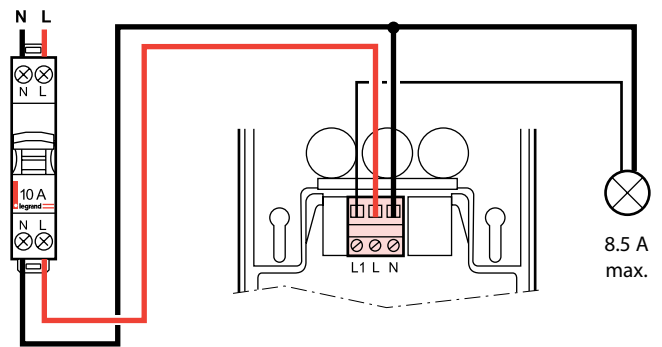
**3. DIMENSIONS**

With protective cover

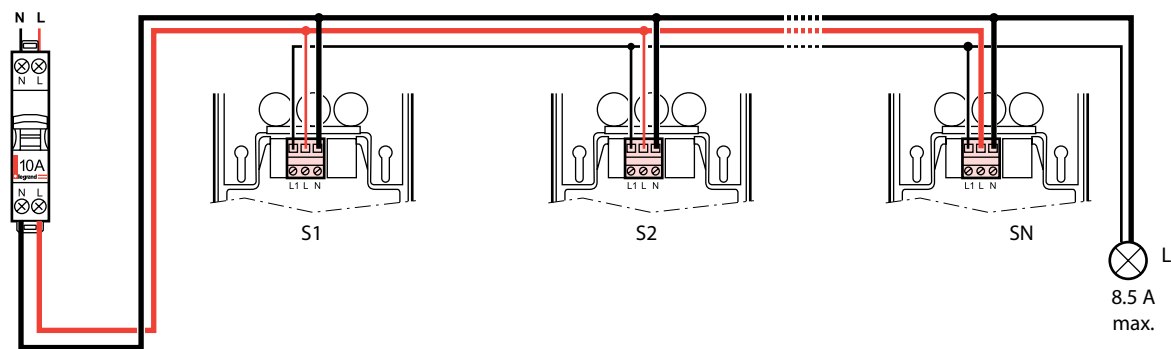


**4. CONNECTION**

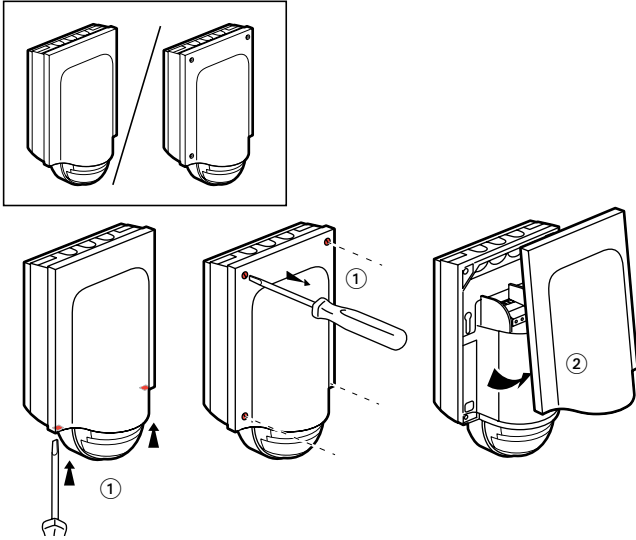
■ 4.1 Wiring with auxiliary control:



■ 4.2 Wiring for a single load connected in parallel

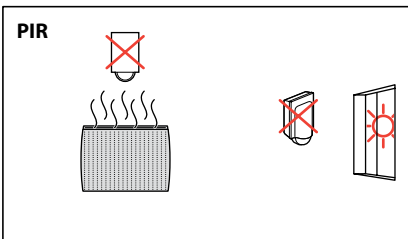
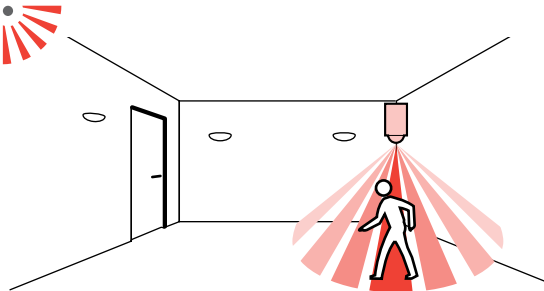


**5. REMOVAL**



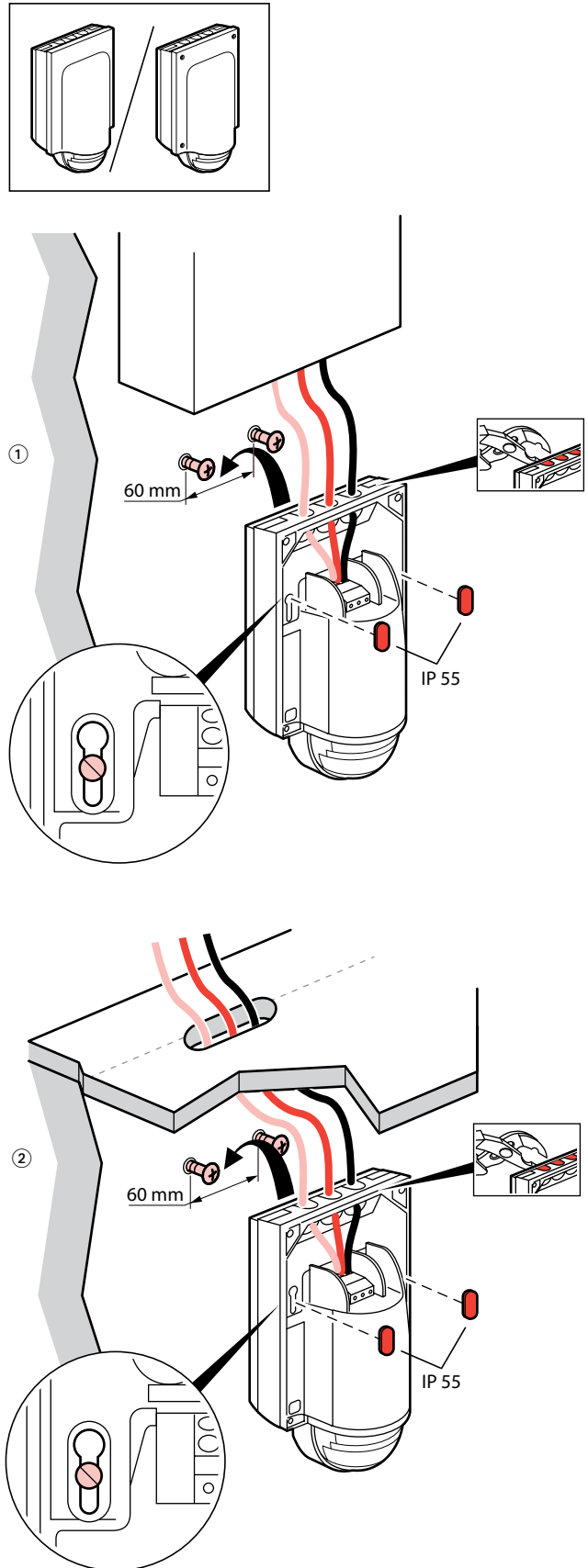
**6. INSTALLATION**

■ **6.1 Sensor positioning**



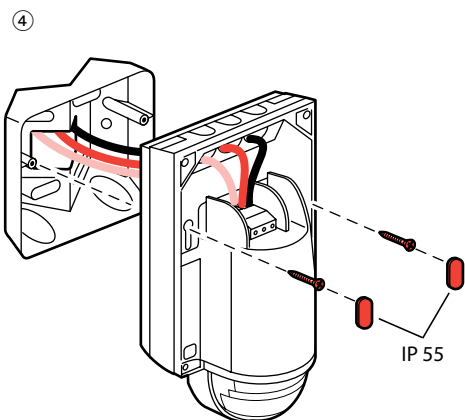
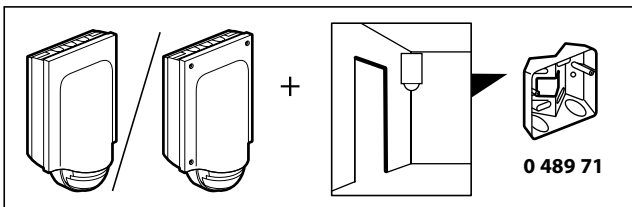
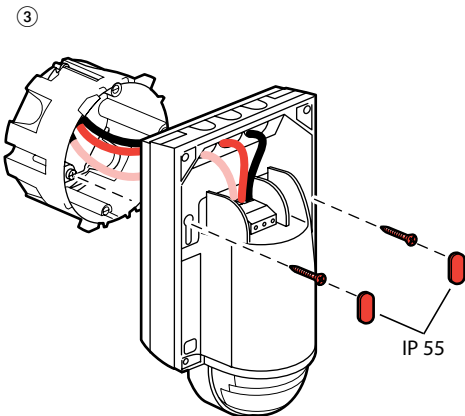
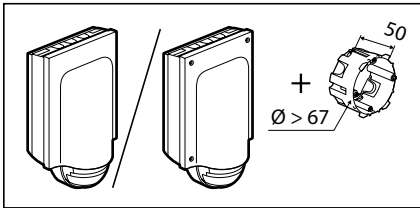
**6. INSTALLATION (continued)**

■ **6.2 Positioning**



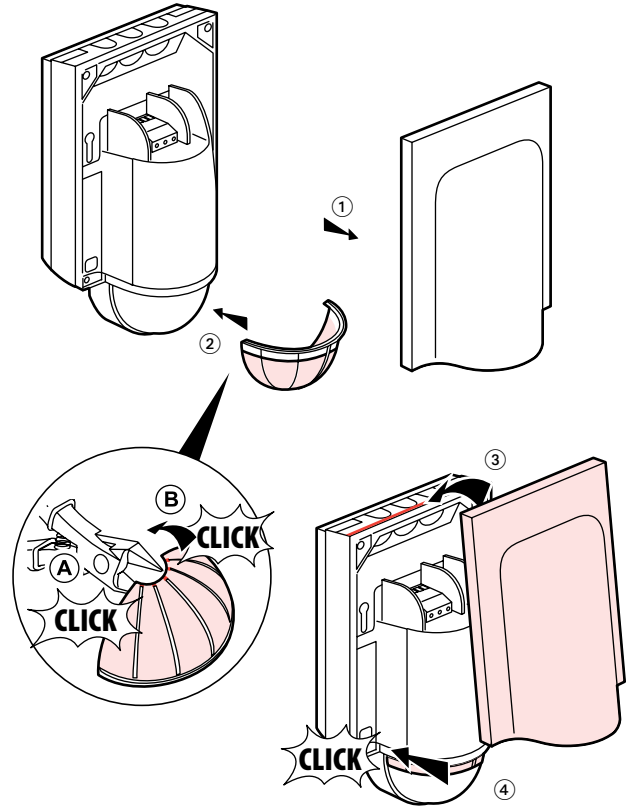
6. INSTALLATION (continued)

6.2 Positioning (continued)



6. INSTALLATION (continued)

6.3 Choice of detection zone



7. SETTINGS

7.1 Detection parameters

Sensor parameter	Default value	Modifiable parameters
Time delay	5 s	5 s to 30 min
Sensitivity	4 m - 8 m	4 m - 8 m
Auto on/Auto off mode	Active	Not modifiable

⌚ **Time delay:** Length of time the load is on after detection occurs

🔊 **Sensitivity:** Detection range setting

🔌 **Auto on/Auto off mode:**

Comes on automatically:

- At the detection of a presence if there is an insufficient natural level of light.

Turns off automatically:

- Where no presence is detected and at the end of the time delay set.

- Or if the natural light level is sufficient (regulation activated).

Any new detection triggers an automatic switch-on if there is insufficient light.

7.2 Light parameters

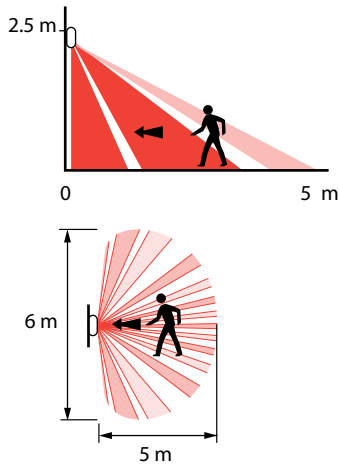
Sensor parameter	Default value	Modifiable parameters
Light level threshold	1000 lux	1 to 1000 lux

☀️ **Light level threshold:** Value at which the load comes on if the natural light level is less than the setting.

**8. PERFORMANCE**

■ 8.1 Max. performance 

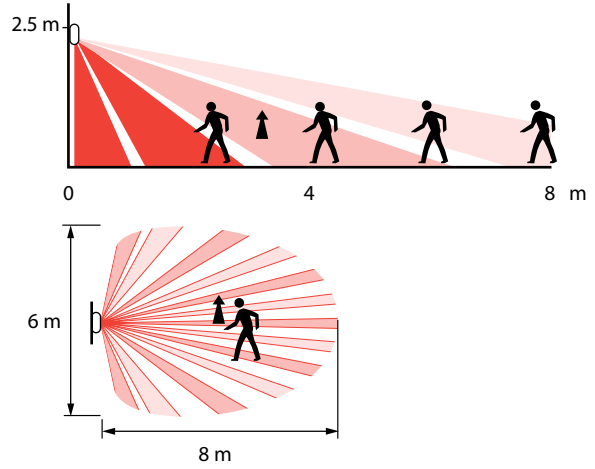
8.1.1 Radial movement 



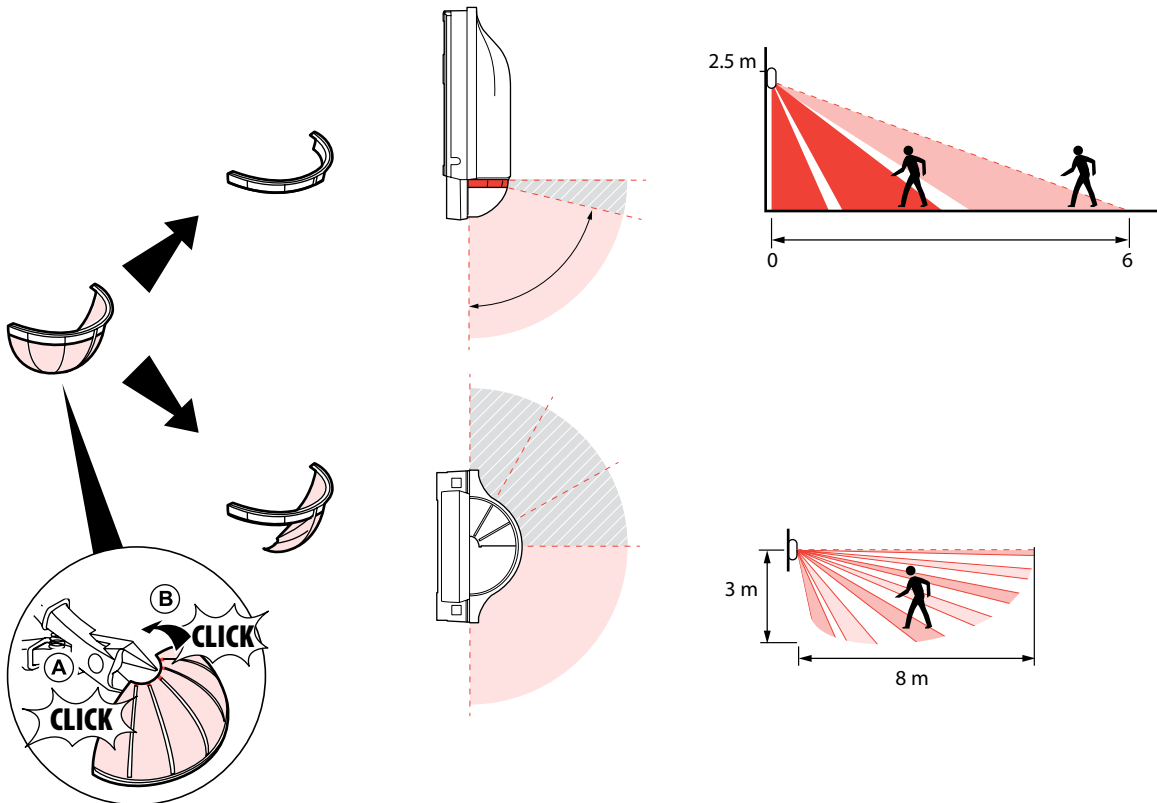
**8. PERFORMANCE (continued)**

■ 8.1 Max. performance  (continued)

8.1.2 Tangential movement 



8.1.3 Performance with blanking plate



**9. CARE**

Keep the lens clean.

Clean the surface with a cloth.

Do not use: acetone, tar-removing cleaning agents or trichloroethylene.

Resistant to the following products: - Hexane (EN 60669-1)

- Methylated spirit
- Soapy water
- Diluted ammonia
- Bleach diluted to 10%
- Window-cleaning products

**Attention:**

Always test before using other special cleaning products.

**10. STANDARDS**

Directive: CE

Installation standards: NFC 15-100

Product standard: IEC 60669-2-1

Environmental standards:

- European directive 2002/96/EC:  
WEEE (Waste Electrical and Electronic Equipment)
- European directive 2002/95/EC:  
RoHS (Restriction of Hazardous Substances)
- Regulations: Public buildings  
Workplace buildings  
High-rise buildings