

ARCHITECTURAL

Metal Switches & Outlets

The sleek Architectural Metal range of switches and outlets from HPM is renowned for its minimalist and contemporary styling.

HPM combines the durability of solid Stainless Steel and Brass with the flexibility of plate sizes and installation methods to create a truly unique solution.

HPM's stunning Flat Plate Series (MS) and Curved Plate Series (MM) ensure a premium finish for both commercial and residential projects.

Flat Plate Series (MS)

A contemporary range of switches and outlets, the HPM MS Series now features a choice of two plate sizes and a new installation method for faster and easier fit off.

With clean lines and flush mounting (no shadow lines), the solid Stainless Steel and Brass MS Series ensures a premium finish for your next project.

The MS range comprises a comprehensive selection of switches, outlets, dimmers and the new MS Superdimmer, offering remote and touch lighting control.



■ MS300E

■ MS788

Curved Plate Series (MM)

The HPM MM Series comprises a comprehensive range of switches and outlets in a solid Stainless Steel and Brass finish.

With an elegant curved outline, the MM Series presents specifiers with a selection of durable switch plates in both architrave and standard plate sizes, making this range ideal for both retrofits and new projects.



■ MM770/2

■ MM300E



■ MS777LP

■ MS770/2LP

■ MS770/1SP

■ MS777LP

■ MS400ESDLP

■ MM788

■ MS787/1SP

HPM Architectural Metal Range – a complete choice of plate sizes, finishes and combinations.

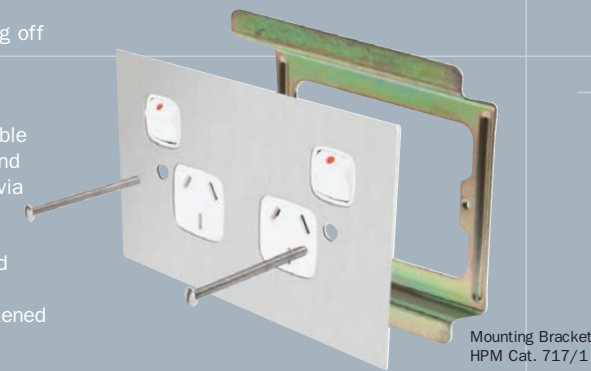
New MS Series installation design - for a choice of building materials and applications.

Gyprock or Wallboard Installations

An earth conductor must be available when fitting off MS Series switches and outlets in gyprock or wallboard to ensure electrical safety.

To fit off MS Series switches and outlets, the cable must be passed through the mounting bracket and terminated, ensuring the metal plate is earthed via the earth wire provided.

For ease of fit off, the grid and plate are screwed loosely to the bracket. The bracket can then be passed through the wall cut-out and screws tightened to secure the unit, completing the installation.



Mounting Bracket
HPM Cat. 717/1

Grid, plate and earth wire come pre-assembled for ease of installation.

Brick or Rendered Wall Installations - with earth conductor

To fit off MS Series switches and outlets in brick or rendered walls, the cable must be terminated, ensuring the metal plate is earthed via the earth wire provided.

The grid and plate is then screwed to a standard wall-mounting accessory, completing the installation.



Wall Box
HPM Cat. 429

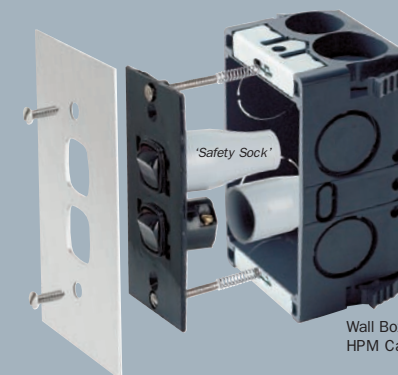
Grid, plate and earth wire come pre-assembled for ease of installation.

Brick or Rendered Wall Installations - without earth conductor

To fit off MS Series switches in brick or rendered walls where an earth wire is not available, the grid and plate must be installed independently to ensure electrical safety.

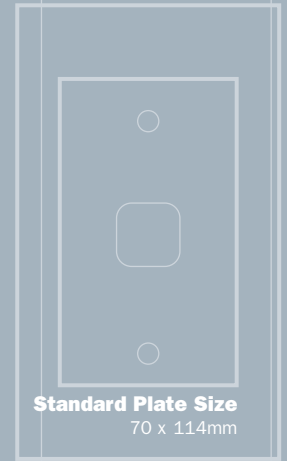
Cable must be passed through each insulating shroud (HPM's unique 'Safety Sock') and terminated. Once terminated, the 'Safety Sock' is fitted over the mechanism ensuring double insulation pursuant to wiring rules and regulations.

The grid is then screwed to a standard wall-mounting accessory. Using HPM's innovative spring loaded screws, the grid can be positioned at the correct level and the plate screwed to the grid, completing the installation.



Wall Box
HPM Cat. 429

Product includes grid, plate and unique 'Safety Socks'.



Standard Plate Size
70 x 114mm

Large Plate Size
88 x 138mm

Plate combinations

The MS Series from HPM is available in two plate sizes. With a choice of standard (70 x 114mm) or large format plates (88 x 138mm), you are able to co-ordinate switches and outlets to meet your requirements.





Double Powerpoints (available in large size only)

Available in Stainless Steel and Solid Brass finishes. Standard grid and mechanism colours are white, black and brown. MS and MM Series is supplied with 84mm mounting centres. Rated at 10A. Options available: 15A mechanisms, neons and shutters.



Single Powerpoints (large plate size)

Available in Stainless Steel and Solid Brass finishes. Standard grid and mechanism colours are white, black and brown. MS and MM Series is supplied with 84mm mounting centres. Rated at 10A. Options available: 15A mechanism, neon and shutter.



Single Powerpoints (standard plate size)

Available in Stainless Steel and Solid Brass finishes. Standard grid and mechanism colours are white, black and brown. MS and MM Series is supplied with 84mm mounting centres. Rated at 10A. Options available: 15A mechanism, neon and shutter.



Single Vertical Powerpoints (standard and large plate sizes*)

Available in Stainless Steel and Solid Brass finishes. Standard grid and mechanism colours are white, black and brown. MS and MM series is supplied with 84mm mounting centres. Rated at 10A. Options available: 15A and double pole mechanism, neon and shutter.



Switches (standard and large plate sizes*)

Available in Stainless Steel and Solid Brass finishes. Standard grid and mechanism colours are white, black and brown. MS and MM series is supplied with 84mm mounting centres. Rated at 10A. Available in 1 - 6 gang (6 gang available in large plate size only)



Dimmers (standard and large plate sizes*)

Available in Stainless Steel and Solid Brass finishes. Standard grid and mechanism colours are white, black and brown. MS and MM series is supplied with 84mm mounting centres. Available dimmer ratings are: 200VA, 300VA, 400VA, 420VA (trailing edge dimmer for electronic transformers), 500VA.



MS Superdimmer (available in MS Series and large plate size only)

The MS Superdimmer (400VA) is a light switch and a dimmer in one stylish unit operated by either a remote or touch control. Programming functions provide a wide range of options including 'soft start' ramp-up and 'easy off' ramp-down timing. Optimum lighting levels can be pre-set.



Telephone, Data & TV Outlets (standard and large plate sizes*)

Available in Stainless Steel and Solid Brass finishes. Standard grid and mechanism colours are white, black and brown. MS and MM series is supplied with 84mm mounting centres.

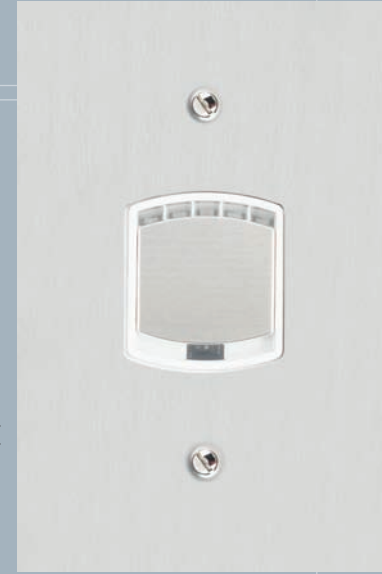


Multi Series Switches and Outlets (available in MS Series only)

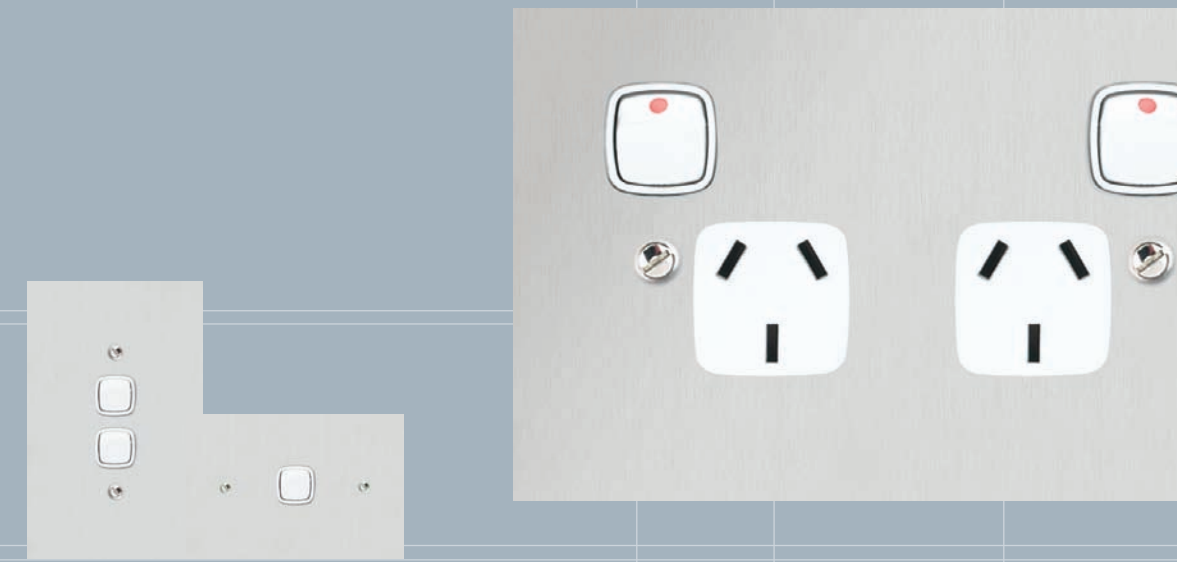
ESCO range, Alpha System, Multi Series range and International Shaver Supply Units available in Stainless Steel and Solid Brass finishes. Standard grid and mechanism colours are white, black and brown. For further detail on these products contact HPM.

* MM Series available in standard plate size only

ARCHITECTU



ARCHBRO
011123/E/1



ARCHITECTURAL

Metal Switches & Outlets