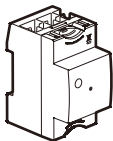
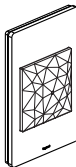


Requires prior installation of Excel Life with Netatmo Gateway or Starter Kit:



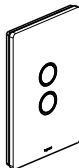
DIN-rail Gateway
(Cat no. 412181)

OR



Starter kit
(EWNSKIT series)

Pack contents:



Wireless switch

Frequency bands: 2.4 - 2.4835 GHz
Power level: <100mW

Installing the wireless switch

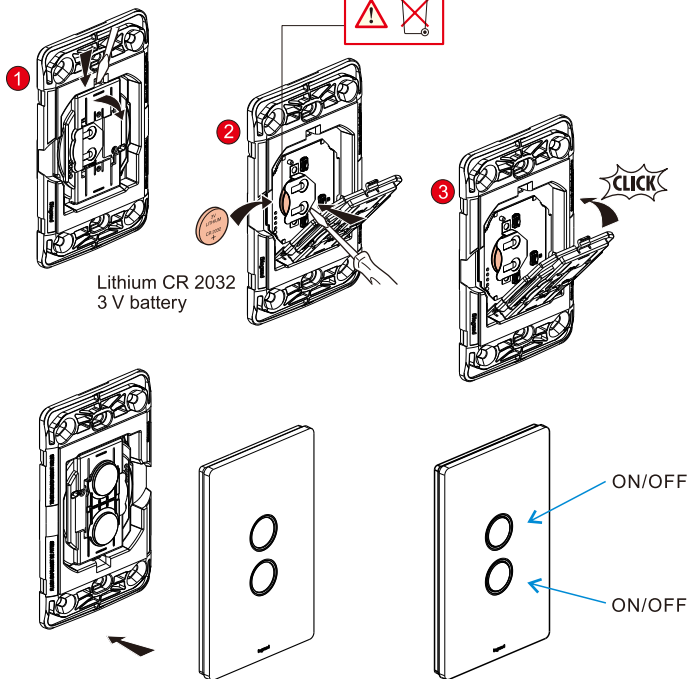
To pair the wireless switch for lights and electrical devices with your connected installation, you should follow the instructions:

- in the **user guide in your Starter kit**
- in the **Legrand Home + Control application** (Settings/Add a new product section)
- or consult the user manual on <http://ecat.legrand.com.au/>



Legrand - Australia 1300 369 777
www.legrand.com.au
Legrand - New Zealand 0800 476 009
www.legrand.co.nz

Replacing the battery



Warranty

Legrand Australia Pty Ltd warrants this product for a period of 12 months from the date of purchase. These goods come with guarantees that cannot be excluded under the Australian and New Zealand Consumer Laws. You are entitled to a replacement or a refund for a major failure and compensation for any other reasonably foreseeable loss or damage. You are also entitled to have the goods repaired or replaced if the goods fail to be of acceptable quality and the failure does not amount to a major failure.